

## "Sing the Musicals" Day 2

**Saturday November 14th**

**Arrive from 10.45am to Start at 11am.**

**Mini-concert at 3.15pm**

"Challenge Yourself" to learn songs from the musicals and take part in a concert all in one day! We will have two fun sessions (11.00am - 12.30pm & 1.30pm - 3.00pm) learning songs from musicals under the expert tuition of Peter Brown.

All music provided. No experience needed.

**Registration (forms online & at the Hall)**

Please book a place by completing a form and return it to Gill Bray at the Hall.

**Adults £5.00, Children (under 18) £2.50**

includes drinks & biscuits through the day.



Please bring a packed lunch.

**Afternoon Concert at 3.15pm**

Refreshments available.

Please invite everyone you know to come along!

Challenge Yourself

## DOG WHISPERING COMES TO SHILBOTTLE!

Discover how to communicate  
with your dog

Free Introductory Session  
including registration for a 10  
week course in the New Year

**Tuesday December 8th**  
**2pm—4pm**

The course will be run by Dusty  
Mack who is an ex RAF, Police and  
Guide Dog instructor  
Places are limited.

To book a place contact Gill at  
the Hall or on 07946537703



## More Challenge Yourself events ...

We are still looking into the following classes and  
events using the "Challenge Yourself" money ... *Children's & Adult French lessons*  
~ *Further exercise classes* ~ *Local History class* ~ *More musical events*

If you have any ideas for a workshop or class, please let us know.

Challenge Yourself



## ALNWICK DISTRICT FOOD BANK

If you are worried about going hungry and would like details about how the Food Bank can help you, please contact [alnwickfoodbank@gmail.com](mailto:alnwickfoodbank@gmail.com) or CAB or NETs. If you would like to donate to the Food Bank please bring donations to the Hall or hand donations to a member of St. James Church or Gateway Church. More details available on the website or at the Hall.

## Contact Us



### Management Committee Contacts:

**Bookings:** Carol Burnett or Gill Bray  
**Treasurer:** Gill Bray 01665 575 196 / 07946537703



**Email:** [shilbottlecommunityhall@gmail.com](mailto:shilbottlecommunityhall@gmail.com)

**Address:** Shilbottle Community Hall,  
Grange Road, Shilbottle,  
Alnwick, Northumberland NE66 2XH



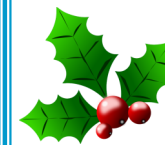
**Telephone:** 01665 581 599  
**Website:** [www.shilbottlecommunityhall.co.uk](http://www.shilbottlecommunityhall.co.uk)

Registered Charity No.: 1129088

Company No.: 06817532

# Shilbottle Community Hall

A Resource for All the Community



Welcome to the new "What's On" for  
November and December 2015.

Inside you'll find details of all the  
usual events that are happening up  
to the end of the year along with details of the  
Christmas Fair, the second "Sing the Musicals"  
day and Lillian Hume's annual soup  
and sweet event.

We'd like to thank everyone who passed  
on their *Reflections and Dreams* for our 5th birthday  
celebrations ~ the display  
will remain in the foyer  
until mid-November for  
those who haven't seen it  
yet. Special thanks go to  
Irene Marshall and Eve  
Wilson who made and iced  
the cake for the 5th birthday celebration.



We are planning various new events for 2016,  
including, after the success of  
*Thumbelina*, further family  
productions in conjunction with the  
Highlight's touring scheme, another  
user group New Year party and other  
new fundraising events, so keep  
looking out for publicity. Do let us know if you  
have any fundraising or event ideas too.



We hope to see you at some of the  
upcoming events and hope you  
have a great festive season.



**The Management Committee**



Shilbottle Community Hall has joined  
"The Giving Machine". If you shop online,  
please consider signing up with "The  
Giving Machine" and you can raise funds for free for the  
Hall. A wide range of retailers will donate to good causes.  
Check it out at [www.thegivingmachine.co.uk](http://www.thegivingmachine.co.uk)

# What's On ~ Nov—Dec 2015



## CRAFT & CHAT GROUP

Every Thursday  
1.30pm to 4pm

Run by Gateway Church Northumberland  
Come along to join in the chat and make something at the same time. Bring your own ongoing creation or come along and learn something new. Many in the group enjoy investigating new projects including making something new from something old! All welcome.



## FREE INTERNET ACCESS & WIFI

Every Thursday  
10am to 4pm



Free internet access for your own or the Hall's laptops and opportunity to "have a go" on a computer for those who have limited experience. Help is available with using a computer, writing letters, job applications, online shopping purchases etc.



## QUIZ NIGHTS ~ doors open 6.45pm for a 7pm start

Friday December 18th

Why not come along for a fun night out? £2 per person with teams of up to 6 people. Bring your own drinks and nibbles. Raffle and Spot prizes.

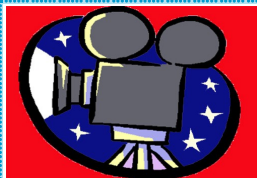
## AFTERNOON BINGO & AFTERNOON TEA

Thursdays November 19th & December 17th  
1.30pm—3.00pm

Come along and join in the fun.

Enjoy a cup of tea with cake or biscuits with old and new friends.

£1 per person includes refreshments. £2.40 for 6 games. Eyes down at 1.30pm



## FILMS ...

Friday Evening November 20th ~ 7pm start

Wednesday Afternoon November 25th ~ 2pm start

Christmas themed film

~ Friday December 11th ~ 3pm start

Look for notices at the hall for details of the film being shown or join the Hall Film Club by contacting the Hall and obtain the password for the online film guide. Free entrance. Refreshments available. Donations to hall funds welcome.

## CHRISTMAS FAIR

Saturday November 28th  
12 noon—2.00pm



Entrance:  
Adults £1,  
Children 50p  
including drink

Soup and Roll:  
Adults £3.50  
& Children £1.50



Raffle, tombola, cakes & produce, domino card, books, crafts, photographs, refreshments, children's games & more



Meet Father Christmas  
in his Grotto

Stalls not raising money  
for the hall £5 a table ~ to book a table  
contact Gill Bray (see back of leaflet).



## DROP IN for coffee, chat and lunch!

Every Thursday 10am to 4pm

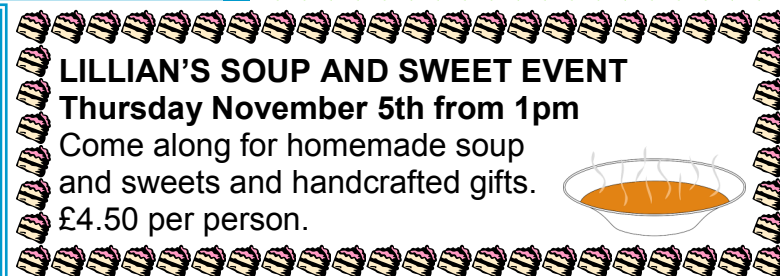
Run by Gateway Church Northumberland  
[www.gatewaychurchnorthumberland.co.uk](http://www.gatewaychurchnorthumberland.co.uk)



Enjoy a free cup of tea or coffee, have a chat, read the newspaper, play pool and get out of the cold winter air. There's free soup and roll for lunch at around 12.30pm. Need a lift? Give us a ring on 01665575697 or 07946537703.



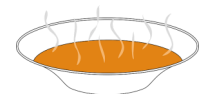
The hall is available to hire for private parties, an hour of badminton or other events, groups or meetings subject to availability. We are always looking for new groups to use the hall. Please contact us for details.



## LILLIAN'S SOUP AND SWEET EVENT

Thursday November 5th from 1pm

Come along for homemade soup and sweets and handcrafted gifts. £4.50 per person.



## Regular Groups

### Monday

Boxercise Class  
11am-Noon

Monday Club  
1.30pm—3.30pm

Children's Dance Classes  
5.00pm—6.30pm

### Tuesday

Tai Chi Class  
10.30am—11.30am

Over 50s Keep Fit  
2.00pm—3.00pm

Children's Dance Classes  
5.00pm—6.30pm

Carpet Bowls  
7.00pm - 10.00pm

### Wednesday

Recreational Art Group  
Irene Hilsdon  
9.30am—12.30pm

Junior Youth Group  
5.00pm—6.30pm

Jazz Dance  
6.30pm - 7.15pm

Gateway Badminton  
7.30pm—9.30pm

### Thursday

Toddlers  
9.00am—11.00pm

Gateway Drop In  
10.00am—4.00pm

Craft Group  
1.30pm—4.00pm

Wi-Fi/Computer/Internet  
Access  
10.00am—4.00pm

Senior Youth Group  
6.30pm—8.30pm

Over 60s  
(2nd Thursday of the Month)  
6.30pm—9.00pm

Shilbottle W.I.  
(3rd Thursday of the Month)  
7.15pm—9.00pm

### Friday

Art Class ~ Fiona White  
9.30am—12.30pm

Clooties Group  
9.30am—12.30pm

Sing with Me  
1.30pm—2.30pm

Boxercise  
5.30pm—6.30pm

### Sunday

Gateway Church  
Lunch at 1.30pm  
Meeting at 2.30pm