

Group Focus ~ Shilbottle W.I.

Did you know that there is a group that meets regularly in the Community Hall, which gives women of all ages the opportunity to meet friends and learn new skills? In recent times we have tried sand sculpture, a climbing wall, quizzes, darts, dominoes and bowls among other events. We have sent delegates to the Albert hall and to residential courses at an Oxfordshire college.



Within the village we have regular walks, a book club and a lunch group. At the monthly meeting we have a varied programme of speakers and demonstrators. In the coming season, for example, we will welcome a steel band, a stained glass workshop and also talks on Grace Darling and rescue dogs.

We fully participate in community events, for instance, tree planting and litter picking. We have planted and maintain a small garden at the hall, provided the notice board and have a popular cake stall at the village fairs.

This is a brief description of the Women's Institute, which meets on the third Thursday of the month at 7.15pm. Do come along to any meeting to give us a try and you will be made most welcome. This year sees the 85th anniversary of the founding of Shilbottle W.I., which gives us the opportunity to have a party in November.



Contact Us

Bookings: Carol Burnett 01665 581 126

Management Committee Contacts:

Secretary: Sheila Huggins 01665 575 257

Treasurer: Gill Bray 01665 575 196

Email: shilbottlecommunityhall@gmail.com

Address: Shilbottle Community Hall,
Grange Road, Shilbottle,
Alnwick, Northumberland NE66 2XH

Website: www.shilbottlecommunityhall.co.uk

Registered Charity No.: 1129088

Company No.: 06817532

Shilbottle Community Hall

A Resource for All the Community

What's On ~ Sept-Oct 2013



Welcome to the first edition of the new look Shilbottle Community Hall's "**What's On**".

We have a lot of fun events coming up over the next couple of months as well as all the usual regular group activities.

In September we have our annual **Autumn Fayre** with all the usual stalls and activities. In October we have a special event when our regular groups will be demonstrating what goes on at their meetings as we have a Hall **Open Day**.

Please come along and support the hall at some of our events or consider joining a new group.

The Management Committee

Our thanks to the **Lendrum Family Community First Fund** for their support in meeting the costs of producing this leaflet.



QUIZ NIGHTS ~ doors open 6.45pm for a 7pm start
Friday September 6th & October TBC



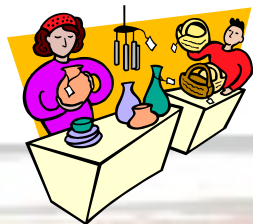
Why not come along for a fun night out? £2 per person with teams of up to 6 people. Bring your own drinks and nibbles. Raffle and Spot prizes.

FILM NIGHTS ~ doors open 6.45pm for a 7pm start
Friday September 27th & Friday October 25th

Look for notices at the hall for details of the films being shown. Free entrance ~ donations to hall funds welcome. Refreshments on sale



AUTUMN FAYRE
Saturday September 14th
Doors open 10am



Adults £1 & Children 50p

All the usual stalls and activities, raffle and domino card.

Stalls £5

Contact Sheila on 01665575257 to book a stall or for more information

OPEN MORNING
Saturday October 19th
Doors open 10am

Refreshments, raffle, domino card, group displays and demonstrations

Come along to see the hall's facilities and find out about the groups that meet at the hall



MACMILLAN COFFEE MORNING
Friday September 27th from 10am to 3pm



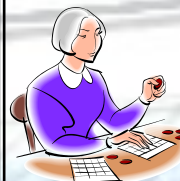
Come along and support the work of MacMillan nurses. Enjoy a tea or coffee with friends along with cake and biscuits and make a donation to the charity.

AFTERNOON BINGO & AFTERNOON TEA

1.30pm—3.00pm

Thursday September 19th & Thursday October 17th

Come along and join in the fun. Enjoy a cup of tea with cake or biscuits with old and new friends. £1 per person includes first card. Eyes down at 1.30pm



TEA DANCE & AFTERNOON TEA

2.00pm—5.00pm

Sunday September 8th & Sunday October 13th

50:50 dance. £3.50 per person on the door including afternoon tea. Come along for a great social afternoon.



The hall has many regular events during the week and is available to hire for private parties, an hour of badminton or other events, groups or meetings subject to availability. We are always looking for new groups to use the hall. Please contact Carol for details (see the back of leaflet).

We have just received a grant to enable us to install internet access at the hall and are open to suggestions regarding ways to make this accessible to the community.

Regular Groups
Monday

Monday Club
 1.30pm—3.30pm

Tuesday

Over 50s Keep Fit
 2.00pm—3.00pm

Carpet Bowls
 7.00pm—9.00pm

Clooties Group
 6.30pm—8.30pm

Wednesday

Recreational Art Group
 9.30am—12.30pm

Carpet Bowls
 1.30pm—4.00pm

Junior Youth Group
 5.00pm—6.45pm

Thursday

Toddlers
 9.00am—11.00am
 Senior Youth Group
 6.30pm—8.30pm

Over 60s

(2nd Thursday of the Month)
 6.30pm—9.00pm

Shilbottle W.I.
 (3rd Thursday of the Month)
 7.15pm—9.00pm

Friday

Sing with Me
 1.30pm—2.30pm

Ruth Darby also runs Spanish lessons through the year ~ for details please contact Ruth on 01665581372