

**NOVEMBER
CLUB**

Challenge Yourself

Beyond the End of the Road

Do you have a story about living or working in rural Northumberland? Do you have a desire to act or sing? Look out for a date in May/ June for a project coming to Shilbottle Community Hall soon.



Performing arts company November Club in Partnership with Highlights Rural Touring Scheme will be holding an introductory session to talk to us about its new project '**Beyond the End of the Road**' - a play with music inspired by the stories of rural and farming communities across Northumberland. The session will be a chance to share your stories and find out how you can take part in the project.

To register your interest contact Gill Bray.



ROYAL
VOLUNTARY
SERVICE
Together for older people

Shilbottle Men's Group

**Helping you
stay
Connected**

The RVS is hoping to start a group for older men who find it difficult to get out and about, and who would benefit from meeting other local people. It is hoped the group will meet on Tuesday afternoons at the Hall from 2pm-4pm. Transport can be arranged for those who would need it. There would be a small weekly charge to cover costs.

If you are interested or know someone who would be interested, please contact:

**Jan & Martyn
01665 581 404**

janandmartyn@btinternet.com



ALNWICK DISTRICT FOOD BANK If you are worried about going hungry and would like details about how the Food Bank can help you, please contact alnwickdistrictfoodbank@gmail.com or CAB or NETs. If you would like to donate to the Food Bank please bring donations to the Hall or hand donations to a member of St. James Church or Gateway Church. More details on the website or at the Hall.

Contact Us



Management Committee Contacts:

Bookings: Gill Bray
Treasurer: Gill Bray 01665 575 196 / 07946537703



Email: shilbottlecommunityhall@gmail.com

Address: Shilbottle Community Hall, Grange Road, Shilbottle, Alnwick, Northumberland NE66 2XH



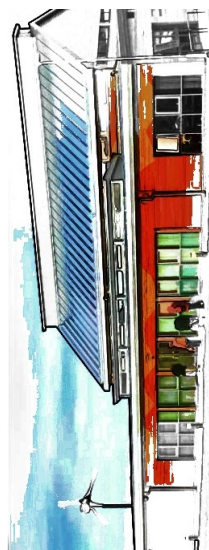
Telephone: 01665 581 599
Website: www.shilbottlecommunityhall.co.uk

Registered Charity No.: 1129088

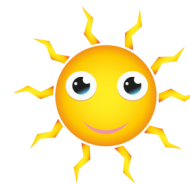
Company No.: 06817532

Shilbottle Community Hall

A Resource for All the Community



Welcome to the new edition of the What's On



Inside this edition, you'll find details of all the usual events that are happening during the next two months along with a number of extra events including the **Summer Fair** on Saturday June 25th.

We have recently had some new groups starting at the Hall ~ two **Craft Groups** that meet fortnightly on Tuesdays and Fridays and a **Quilting Group** that meets monthly on a Saturday. **Messy Church** also returns in June.



We are looking into the possibility of running the Art Workshops again in the Summer Holidays and some sporting sessions ~ watch out for publicity soon

There's also some information on the back of the What's On about an exciting new project coming to the village soon ~ do let us know if you're interested in getting involved somehow.



We hope to see you soon!
The Management Committee

If you shop in Sainsbury's but don't have a connection to a school collecting "Active Kids" vouchers, please take the offered vouchers and place them in the box in the Hall foyer. All vouchers collected will go to Shilbottle First School. Thanks



Sainsbury's
Active Kids
Eat well • Move well • Live well



Shilbottle Community Hall has joined "The Giving Machine". If you shop online, please consider signing up with "The Giving Machine" and you can raise funds for free for the Hall. A wide range of retailers will donate to good causes. Check it out at www.thegivingmachine.co.uk

CRAFT & CHAT GROUP

Every Thursday

1.30pm to 4pm

Run by Gateway Church Northumberland
Come along to join in the craft & chat
Bring your own ongoing creation or
come along and learn something
new. Many in the group
enjoy investigating new
projects including
making something new
from something old!
All welcome.



FREE INTERNET ACCESS & WIFI

Every Thursday 10am-4pm

Free internet access & the chance to
try a computer for those who have
limited experience. Help is available
with using a computer, writing letters,
job applications, online shopping
purchases etc. Use your own or the
Hall's laptops.



DROP IN for coffee, chat and lunch!

Every Thursday 10am to 4pm

Run by Gateway Church Northumberland
www.gatewaychurchnorthumberland.co.uk

Enjoy a free cup of tea or coffee, have a chat, read the
newspaper, play pool and get out of the cold winter air.
There's free soup and roll for lunch at around 12.30pm.
Need a lift? Give us a ring on 01665575697 or 07946537703.

Please watch for details of changes to the Drop In in the next
couple of months and offers of help that will be available to you.



QUIZ NIGHTS ~ doors open 6.45pm for a 7pm start

Fridays May 13th and June 10th

Why not come along for a fun night out? £2 per person with teams of up
to 6 people. Bring your own drinks and nibbles. Raffle and Spot prizes.

AFTERNOON BINGO & AFTERNOON TEA

Thursdays May 19th and June 16th

1.30pm—3.00pm

Come along and join in the fun.

Enjoy a cup of tea with cake or biscuits with old and new friends.

£1 per person includes refreshments. £2.40 for 6 games. Eyes down at 1.30pm



FILM NIGHTS... Fridays May 20th and June 17th

Look for notices at the hall for details of the film being shown
or join the Hall Film Club by contacting the Hall and obtain
the password for the online film guide. Free entrance.
Refreshments available. Donations to hall funds welcome.

MESSY CHURCH!

Wednesday June 15th

3.15pm—5.15pm

St James' Church invite you
to come along for activities,
story, worship and food.

All are welcome, parents must
be accompanied by at least one
child!



COFFEE MORNING

Saturday May 28th

10am

Drink & Biscuit £1

Book exchange & raffle



SUMMER FAIR

Saturday June 25th

10am - Noon

Entrance: Adult £1 and Child 50p
Includes Drink & Biscuit

Tombola, cake stall,
children's games,
craft stalls, raffle
and more.



To book a stall contact Gill Bray on
01665575196 ~ £5 a table



The hall is available to hire for
private parties, an hour of
badminton or other events,
groups or meetings subject to availability.
We are always looking for new
groups to use the hall.
Please contact us for details.

Regular Groups

Monday

Boxercise Class
11am-Noon

Children's Dance Classes
4.30pm—8.30pm

Tuesday

Tai Chi Class
10.30am—11.30am

Canny Crafters Group
10.30am - 1.30pm
(Every other week)

Over 50s Keep Fit
2.00pm—3.00pm

Carpet Bowls
7.00pm - 10.00pm

Wednesday

Recreational Art Group
Irene Hilsdon
9.30am—12.30pm

Junior Youth Group
5.00pm—6.30pm
(Every other week)
Jazz Dance
6.30pm - 7.15pm

Gateway Badminton
7.30pm—9.30pm

Thursday

Toddlers
9.00am—11.00pm

Gateway Drop In
10.00am—4.00pm
Craft Group
1.30pm—4.00pm

Wi-Fi/Computer/
Internet Access
10.00am—4.00pm

Senior Youth Group
6.00pm—8.00pm

Over 60s
(2nd Thursday of the Month)
6.30pm—9.00pm

Shilbottle W.I.
(3rd Thursday of the Month)
7.15pm—9.00pm

Friday

Art Class ~ Fiona White
9.30am—12.30pm

Clooties Group
9.30am—12.30pm

Canny Crafters Group
11.30am - 2.30pm
(Every other week)

Sing with Me
1.30pm—2.30pm

Boxercise
5.30pm—6.30pm

Saturday

Quilting Group
10.00am—4.00pm
(3rd Saturday of the month)

Sunday

Gateway Church
Lunch at 1.30pm
Meeting at 2.30pm